

Installing MedCen 7.1 Build 200

- Make sure ALL machines are out of MedCen before starting.
- Do this on the server.
- The file for this update is called **upd7-1200.exe**

Running the Update from a CD

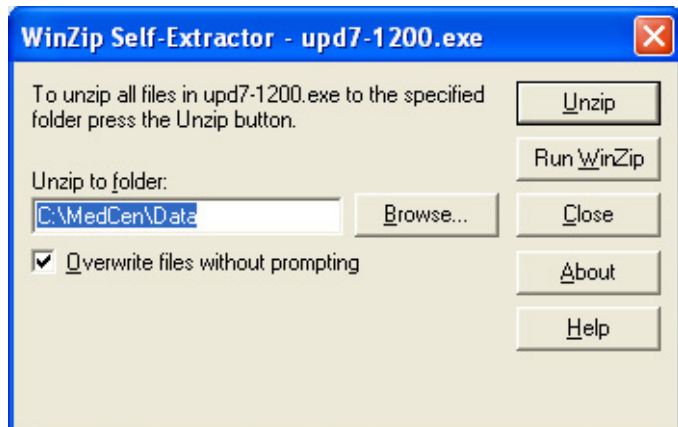
- Insert the CD in the CD Drive.
- If inserting the CD does not automatically open a 'My Computer' window, double-click on 'My Computer', then on the CD's drive letter.
- Once the update file (**upd7-1200.exe**) is visible, double-click on it to start the program.

Downloading the Update from the MedCen Web Site

- You can download the update directly from the MedCen Website at <http://medcen.co.nz/download.html>
- Save the update file wherever you like, as long as you can find it later. Usually you should save to the Desktop or the My Documents folder.
- Once the update file has been downloaded, double-click on it to start the program.

When this window appears

- This update installs to the MedCen Data folder.
- If your MedCen Data folder is **C:\MedCen\Data** you can use the default install path. Just press **Unzip**.
- If your MedCen Data folder is somewhere else, you will need to change it by using the **Browse...** button.
- After the files are unzipped click the **Close** button



Now the updates are ready to be integrated into MedCen.

- Run the MedCen Maintenance Utility (AKA the Swiss Army Knife) **sknife.exe** . This program is located in your MedCen program directory, usually **C:\MedCen**.
- Use the Maintenance Utility to perform a **Data Update**.
- Once the **Data Update** has been completed restart MedCen on the Server, followed by all other terminals.