

Release Notes

MedCen AutoUpdater



MedCen AutoUpdater

Introduction

The MedCen AutoUpdater has been designed to ease the whole MedCen Updates process.

Update by CD as we do presently is reasonably convenient and reliable, but is often not timely. We can only send out, and you only put up with, so many 'Updates' in any given period.

We'd like to do better, we'd like to be able to keep you updated with the latest build of MedCen as soon as it's available, even if it only fixes a minor issue. That minor issue might just be 'your issue', and rather than have all wait for the next big update CD to be put together, months maybe, we can have our Broadband and Internet connection do the job for us right now.

And you won't have to deal with any more MedCen update CD's.

How it works

There is a MedCen Updates website only accessible by this MedCen AutoUpdater program, which uses that website to check for the latest available MedCen version. It can do that at a regular time set by you on the 'Options' page. The program sits in the background ticking away slowly, waiting for it's 'check time', it then connects to the website and gathers the version information. If more recent updates are available than your system is running, it can (depending on your settings in Options) download and or install updates automatically, or inform you that updates are available and wait for you to direct the update process.

This should allow us to post MedCen patches essentially on a daily basis if we need.

You'll have much less to deal with, and if these are just Maintenance releases which they would be, if frequent, then they could probably be applied with as little as one button click, or none if set to fully automatic.

You could anticipate the bigger updates, the 'Data Updates' requiring an 'all users out – general shutdown' only about as often as they do now. No more than three monthly anyway. Even then, it becomes 3 button clicks rather than,.... load the CD, find then unzip the files, hope to hell they went where they needed to. Find and start the MedCen Maintenance Utility then run a Data Update. None of that, ☺ 3 button clicks to do the whole job now.

So, the MedCen AutoUpdater is designed to be a background task entirely separate from your MedCen program. It runs in the background on just one machine that can or need not be running MedCen. (It could be running on your 'server' which does not itself run MedCen, maybe, no problem) It can be set to 'fire' daily or weekly at a chosen time when it checks a dedicated and secure website for update information. If newer updates are available it will act in a manner set by you in Options about how 'far to take the update' before alerting you to complete the process.

The automatic functions can also be set Off, and the updater used at your discretion and timing to check for, and get updates as required at any time.

MedCen AutoUpdater Icons and their meaning

The SysTray Icon for the updater changes appearance to indicate it's state (*The SysTray is the right hand end of the TaskBar on the bottom of your screen, near the clock.*)



Green Icon

AutoWatch, it will Check for updates at the next Scheduled time.

Yellow/Green Icon

Items require your attention.

Blue outline Icon

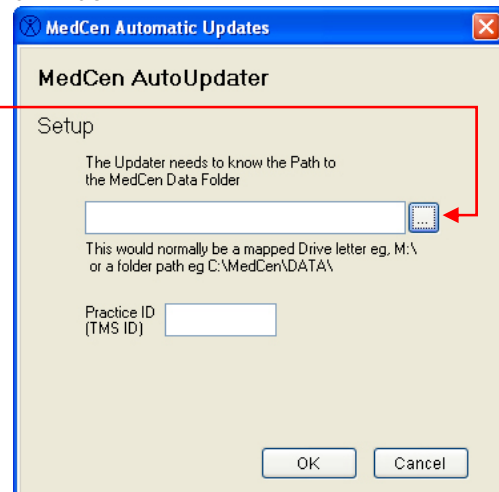
AutoUpdates turned Off.

Read the instructions below as you start the MedCen AutoUpdater for the first time. Work through them and you'll check for updates and learn how it all works before deciding on what level of Auto Updates suits your setup and use of MedCen.

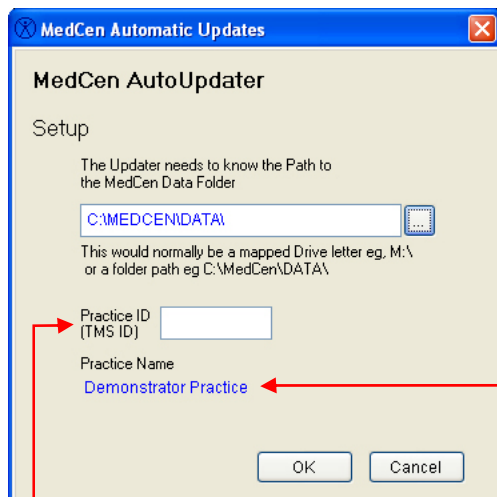
Starting for the first time

Click the Start button, then find the MedCen group in your programs list, then click on the "MedCen Updater" program. You should now see this window:

Click this button to locate the path to your MedCen Data Folder.



When you chosen a path the window will display the practice name it finds in blue as shown below.



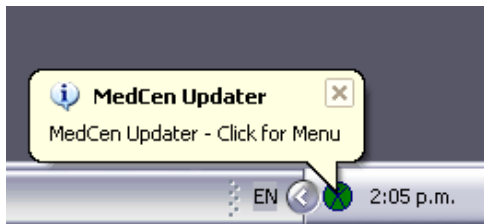
If this does not match the practice name provided in the attached letter, you need to call the MedCen support line (0800 633 236), so that we can change the login details for you. Without the correct login details, the AutoUpdater won't be able to download updates for you.

Here you must enter the practice ID also supplied in the attached letter.

If you have never changed or edited your practice name, the AutoUpdater may not be able to automatically be able to detect your practice name. In which case, you will be prompted to contact the MedCen support line, so that we can help you set up your practice name within MedCen.

Now if you click the 'OK' button, the AutoUpdater should start.

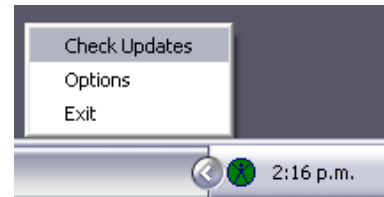
When the AutoUpdater is running



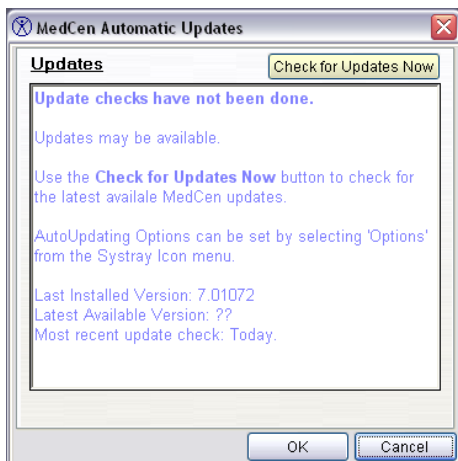
When you run the updater it will appear as an Icon in the Systray on you screen.

Access the Updater by clicking on the icon, a menu will appear.

- **Check Updates** opens the Updater Interface
- **Options** opens the Options Page
- **Exit** Closes the Updater. Note 'Exiting' the Updater turns off Automatic Update checking.



The first task will be to check operation of the Updater, that it can connect to the MedCent updates web site successfully and check for updates. If updates are available we'll (optionally) download them and install so that your MedCent is fully up to date.



Clicking on **Check Updates** opens the Updater form.

*(Note closing this form with the X in the top right corner returns the form to the SysTray, **not Exits the Updater.**)*

You'll see progress of updater functions on this form, and the status of updates overall as well. That's for later.

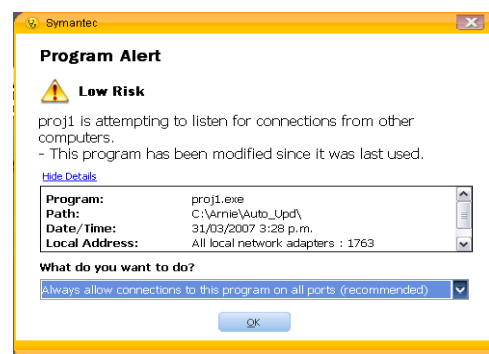
To test the connection to the MedCent update service press the **Check for Updates Now** button at the top of the screen. You may or may not succeed at first depending on the alignment of the planets and the vagaries of the internet. If you do have trouble here, call MedCent support who will help you find whatever setting or property may need changing for

your particular network or internet connection.

One thing you could well run into is Windows XP or your Firewall asking about the Updater's attempt to communicate with another computer.

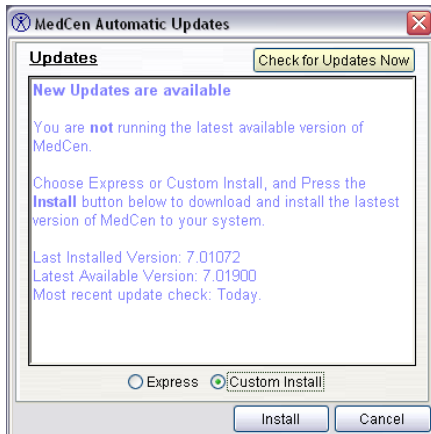
This is your security doing it's job, which is good, you should only have to answer this once for your Updater.

Make sure 'Always Allow Connections for this program' is selected, and click OK.



Note: The image displayed may not match your security software. It is shown to illustrate a typical response from some security software, when a new program is trying to access the internet. The response you get may vary. Those that have their security managed by hardware may not get any visual response at all.

The Updater should now connect, retrieve current Version info and display the result.



Quite possibly updates may be available, as here.

Otherwise the 'You Are Up To Date' message will appear. You can go to the **Updater Options** section below to tell the Update when and how to do its checks.

If updates are available, you have two choices

- Express Install
- Custom Install

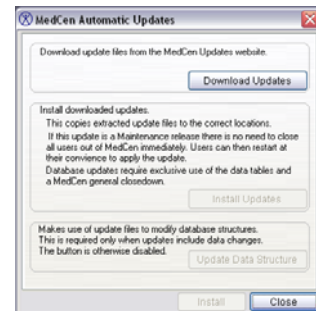
Choose the **Custom Install** dot for this first update attempt by clicking on it. You will better understand the whole update process then.

The OK button has changed to say **Install**, click it to start the process.

These three buttons allow you to control the update process.

Download Updates, Install Updates, Update Data Structure.

Now may be a convenient time to download the updates, but you may wish to not apply them, until later. For example, if a Data Update was available it could be downloaded but not Installed until all users were out of MedCen. Maintenance updates can be downloaded and installed at any time, any user can then restart their MedCen to apply the update.



The three buttons Enable and Disable appropriately as you progress through the process.

So the three steps are, **Download Updates** which downloads the required files from the MedCen Updates web site. Then you'll be able to **Install Updates** which copies files extracted from the download to the required locations for MedCen to pick up. If this update is a Data Update, all users would have to be out of MedCen for this step. If it's a Maintenance Update you can install while everybody keeps working. Their MedCen, within a minute or so, will tell them an update has arrived and that they just need to restart MedCen to update immediately or later.

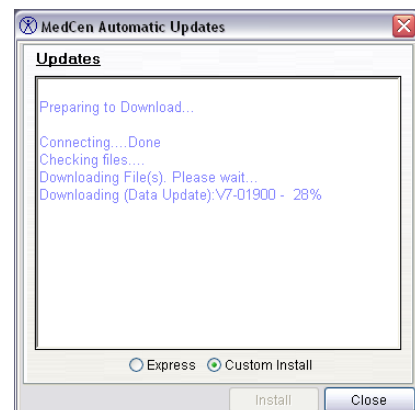
Only if a Data Structure is required will it's button become enabled after Download and Install have completed.

During each process you'll see progress, and the completion of the stage. As each stage completes you'll be taken back to the form above to launch the next process if convenient, or choose to delay it till later by simply closing the form.

You can return to the next task at any time via the SysTray Icon and selecting 'Check Updates'. This form will return where you left off.

The '**Update Data Structure**' button if required, replaces the need to use the MedCen Maintenance Utility to apply Data Structure Updates as in the past. This does the same job.

The Maintenance Utility will still have it's place for database and table repairs if needed.



The Options Page

Or, 'Just how automatic do you want this Updater thing?'

Choose Options from the SysTray Icon menu.

This form appears allowing you to set the same sort of Update Options as Windows itself uses.

You can turn off Automatic updates at the bottom of the page. That turns off automatic checking of the website only, the Updater can and still, should be used to get and apply updates.

Automatic checks can be set for once a week on a day of your choice, or daily. The time to check in either case is also settable.

You can then choose what the updater should do if it finds updates during one of its checks.

- At the minimum it can just notify you that updates are available but download or install nothing.
- It can do the Download automatically but not Install, and notify you.
- Or on full Automatic it can detect, download, install and Update Data Structure if required.

If during a fully automatic update attempt, anything stops the process such as a Data Update Install attempt, due to some user still logged into MedCen, the Updater will simply stop at that stage and notify you, allowing you to complete the process at a convenient time.

It should be entirely possible though, if you chose a good time to set the check, say at night, and on that day of the week all users were closed out of MedCen as you left the office, then all your updates, Data or Maintenance, could be automatically applied for you...while you sleep ☺

If this sounds good, ensure the time does not conflict with any backup or other things that may be 'using' MedCen files.

A text log of the Updaters actions can be kept. Tick the box to turn logging on or off. The text file is 'MC_updater.log'.

Once you've made your choices, choose the OK button to activate them. Choosing Cancel discards any changes made since opening this Options page.

