

Release Notes

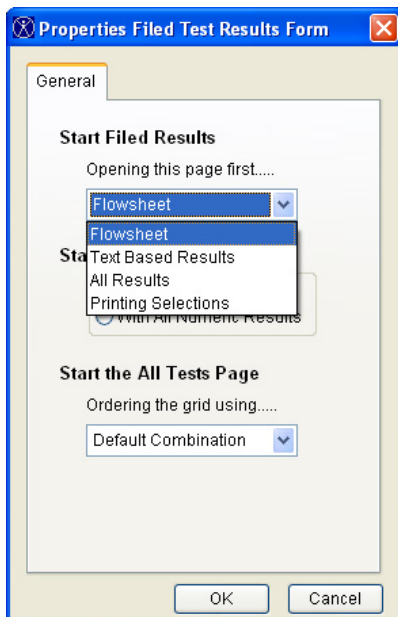
MedCen 7.1 Build 800



From the 'Wish List'

Every user can have a say about how they want MedCen to work for them. For each update, we try to include as many suggestions or requests that you have made. This update we included:

- ❑ On the Possible Duplicates page of the Merge Patient Tool, there is an additional field displaying the status of the patient when comparing possible duplicates. **Please note:** this is not an additional criteria for finding duplicate patients. It has been put here simply to help quickly identify which patient should be kept and which should be merged.
- ❑ The Filed Results window has a new property that will remember your preferred page to open on. To change this, **right-click** near the top of the form and choose **Properties** from the shortcut list that appears. This should bring up the properties window (see image below).



Here you will see the new property **Start Filed Results** which has a dropdown list allowing you to choose your preferred page to have opened automatically when opening the Filed Results for a patient.

No More Bugs!



Bugs can show up in software in many forms. Some will be minor, resulting in some unexpected behaviour. More serious bugs will cause error messages to appear or even cause the system to 'crash'. Let us know if you find any bugs and help us eliminate them! You can contact us by calling 0800 MED CEN (0800 633 236) or by emailing us at support@medcen.co.nz

Resolved Issues

- ❑ When clicking the "Submit" button in the Mental Health Brief Intervention Service window, an error message would display saying that it couldn't find the "hmail.ini" file.

- ❑ The Flowsheet page of the Test Results window didn't display all expected results.

- ❑ The Cover page settings would not remain after MedCen had been restarted.

- ❑ The resize bar in Clinical Notes would not return to the last used position which meant it had to be moved each time the Clinical Notes was opened.

- ❑ When searching for duplicate patients using the Merge Patient Tool, some duplicates did not display as expected.

- ❑ The results page in the Find By tool changed column widths when more than one search was conducted.