

# Release Notes

MedCen 7.1 Build 971

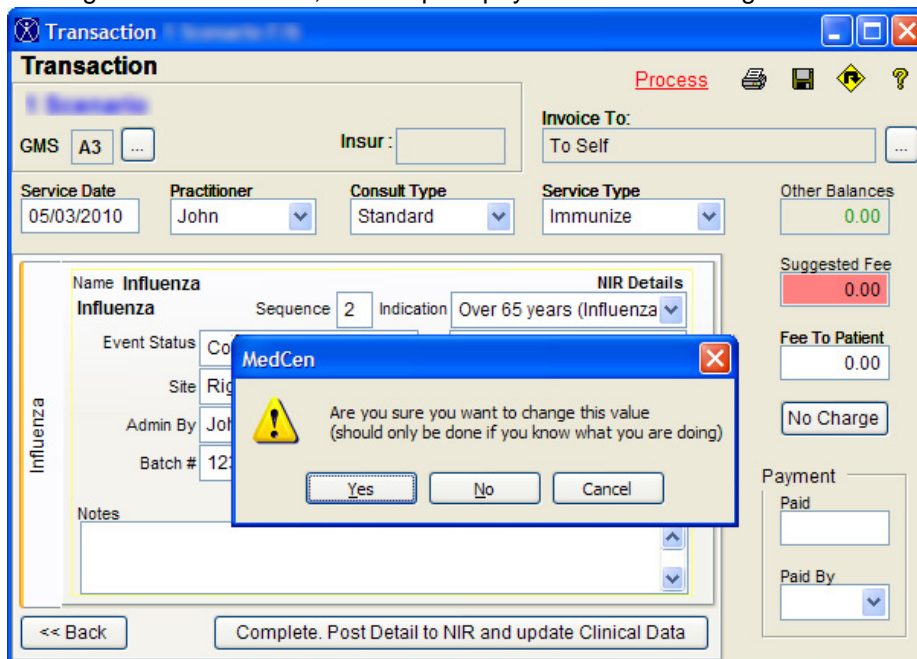


## Flu Vaccine Changes

WHO has decided that the H1N1 novel influenza strain will be included in the 2010 Seasonal Influenza vaccine. As a result, there will be a major initiative in NZ to use this vaccination as the primary preventative for a likely second wave of the pandemic.

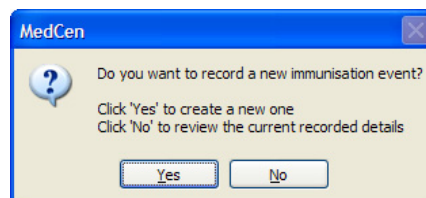
### Changes within MedCen:

- To immunise a patient under the new eligible conditions:
  - Pregnant women
  - Healthy children in high deprivation practices
  - Morbidly obeseMake sure you choose **Influenza Other Eligible Conditions** from the vaccine list.
- NIR details are now required for **all** Flu vaccines, you will now see the 'NIR Details' button available in the transaction window when selecting the appropriate vaccine. You will not be able to complete the transaction unless the NIR details are complete. Electronic claiming should occur as normal and should include any vaccinations you have already performed (i.e. since 1 March 2010).
- The 'Admin Sequence' field can now be changed if administering a second dose for those eligible to receive one, this will prompt you with the message as shown below:



It is recommended that you do not alter this value unless you know the patient should be getting a second dose.

- When recording vaccine details via the Imms tab of the Clinical Data window, if you already have previously recorded flu vaccine details, when you double click the Flu date box, you will be presented with this prompt:




## **No More Bugs!**



Bugs can show up in software in many forms. Some will be minor, resulting in some unexpected behaviour. More serious bugs will cause error messages to appear or even cause the system to 'crash'. Let us know if you find any bugs and help us eliminate them! You can contact us by calling 0800 MED CEN (0800 633 236) or by emailing us at [support@medcen.co.nz](mailto:support@medcen.co.nz)

### **Resolved Issues**

-  The recent changes to the formatting within the letter writer tool, did not format the text as expected for text inserted on the start up of the tool.