

# Release Notes

MedCen 7.1 Build 995



## New Immunisation Fees

The annual rate changes for the Administration of Standard Immunisation (IMOA), the Administration of MeNZB Immunisation (IMMB) and the Administration of Influenza Immunisation (IMFA) will increase as of 1 July 2010, from \$20.79 to \$21.15 (GST inclusive) (\$18.80 GST exclusive).

The new rates have been included with this release.

## New PPP Smoking Indicators

The PHO Performance Programme have developed Smoking Indicators that will complement reporting against the Minister of Health's 1 July 2010 Health Target – 'Better support for smokers to quit'. These indicators have been developed in consultation with the PHO Performance Programme's Advisory Group and the Ministry of Health's Tobacco Control Team, and supports the ABC approach of:

- A: **Asking** if a patient smokes
- B: Giving **brief** advice to quit
- C: Offering **cessation** support

There has been an addition of new ZCPI codes to help consistently identify a patient's current smoking status without having to use a more specific read code. These codes are as follows:

- ZPSA10** – Current smoker NFD
- ZPSA20** – Never smoked tobacco
- ZPSA31** – Ex Smoker > 12 Months
- ZPSA32** – Ex Smoker < 12 Months

There also has been an addition of new ZCPI codes and one read code to help consistently identify which patients have been offered brief advice or cessation support. These codes are as follows:

- 6791.** – Health ed. - smoking
- ZPSB10** – Brief smoking cessation advice was given
- ZPSC10** – Referral to smoking cessation support
- ZPSC20** – Prescribed smoking cessation medication
- ZPSC30** – Provided smoking cessation behavioural support
- ZPSC90** – Patient refused smoking cessation support

To facilitate this approach, the Smoking Status tool (in the measurements page of the Clinical Data window) has been updated and a structural change has been implemented to the database to store related data. Rather than potentially storing multiple smoking status records for a patient in the problem list (which is designed to show current patient problems), only the most recent smoking status will be shown, all others will be maintained within the Smoking Status tool.

Updates to the Smoking Status tool are shown below.

The screenshot shows the 'Clinical Data' window for a patient with DOB 03/12/1967, Age 42 Yrs, CSC A3, and N.H.I. GHA4933. The 'ACC Info' tab is active. The 'Smoking Status' tool is displayed, featuring a table of records, a form for adding new records, and a list of codes. Red numbers 1-8 highlight specific features:

Date	Status	Code	Description	Advice
25/06/2010	Yes	1372.	Trivial smoker - < 1 cig	
25/06/2010	Recently d	1378.	Ex-light smoker (1-9/d	Brief smoking cessatic
25/06/2010	Yes	1374.	Moderate smoker - 10-	Brief smoking cessatic
07/07/2010	Yes	137I.	Passive smoker	Brief smoking cessatic
08/07/2010	Recently d	1378.	Ex-light smoker (1-9/d	Health education - sm
08/07/2010	Recently d	137B.	Ex-very heavy smoker	Health education - sm
08/07/2010	Yes	ZPSA1	Current smoker NFD	Health education - sm

The 'Smoking Status for CVD and CPI' form includes fields for Date, Current Status, Advice given, and Comments. The 'Code' button, Code field, and Description field are also present.

1. **Smoking Status** List – this will show the current list of smoking status records for the patient. It has been enhanced to include showing any advice given to the patient.
2. **Date** field – allows the smoking status date to be modified or historical status records to be added.
3. **Current Status** Dropdown – has the familiar smoking status options. This has been enhanced to automatically populate the **Code** (7) and **Description** (8) fields with the newly introduced ZCPI codes. This means that the status will be identified for the SUR/CPI extraction without having to use more specific read codes.
4. **Advice Given** Dropdown – allows an appropriate advice description to be chosen. This will be automatically identified for the SUR/CPI extraction.
5. **Comments** field – this field has been added to allow any historical comments made to be retained (from the conversion) and allow any new comments required to be stored.
6. **Code** button – this button still opens the read code tool with appropriate read code lists as expected but has also been enhanced to include some additional read codes.
7. **Code** field – as before, this field displays the currently selected code.
8. **Description** field – as before, this field displays the currently selected code.

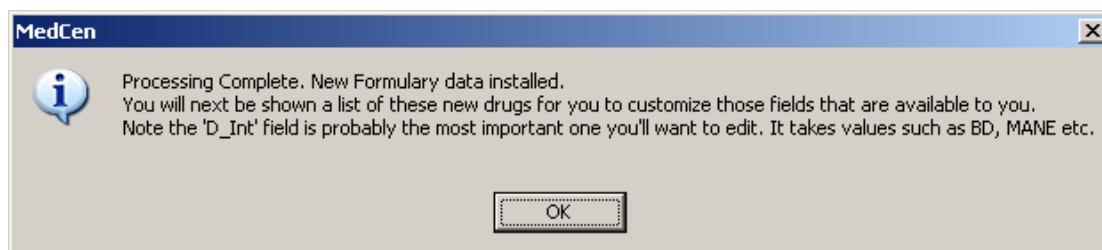
## Formulary Update

New formulary tables have been supplied with this update. The drug update is not automatic though. To update your Formulary you need to;

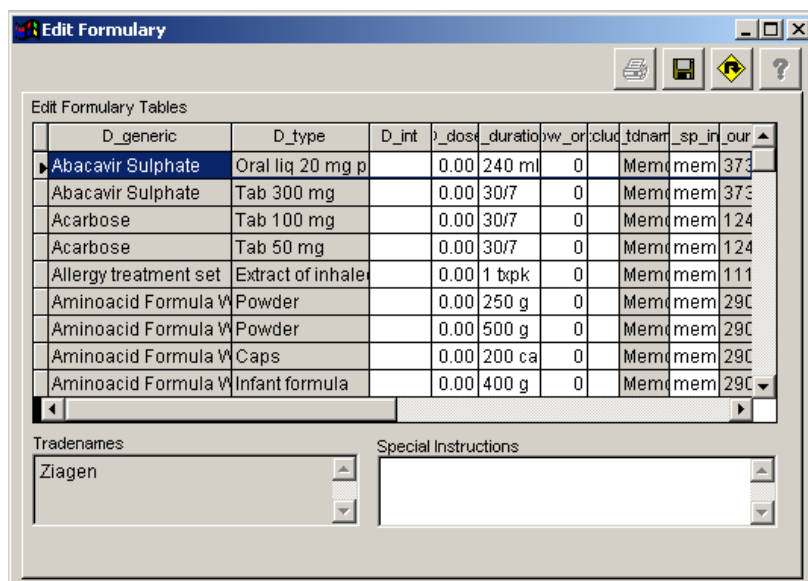
Go to the menu item **Tools->Advanced->Modify Formulary**.

A message box will ask "Do you want to do a NEW Pharmac update", respond Yes, and on the next window that appears, press the 'Update with New Pharmac Data' button.

Once finished you will see the dialog box shown below



Click OK and the below window will be presented...



If you like you can update the field D\_int this will set prescribing preferences for the dosage frequency BD, MANE etc.

You can edit this at any time.

## From the 'Wish List'

Every user can have a say about how they want MedCen to work for them. For each update, we try to include as many suggestions or requests that you have made. This update we included:

- ❑ Men's Wellness programme for Rural Canterbury has had the eligible age range updated to 35 – 65 years old.

## No More Bugs!



Bugs can show up in software in many forms. Some will be minor, resulting in some unexpected behaviour. More serious bugs will cause error messages to appear or even cause the system to 'crash'. Let us know if you find any bugs and help us eliminate them! You can contact us by calling 0800 MED CEN (0800 633 236) or by emailing us at [support@medcen.co.nz](mailto:support@medcen.co.nz)

### Resolved Issues

- ❑ When inserting medications into a letter using the Letter Writing tool, the prescription details did not display as expected.